

SATURN 2 3D Printer

www.elegoo.com



Thank you for purchasing ELEGOO SATURN 2 3D printer.

This instruction applies to Saturn 2 printers.

Please unbox and inspect the printer upon receiving it.

If you have any questions regarding the printer, please contact us at 3dp@elegoo.com.

Please read the instruction carefully before you use the printer.



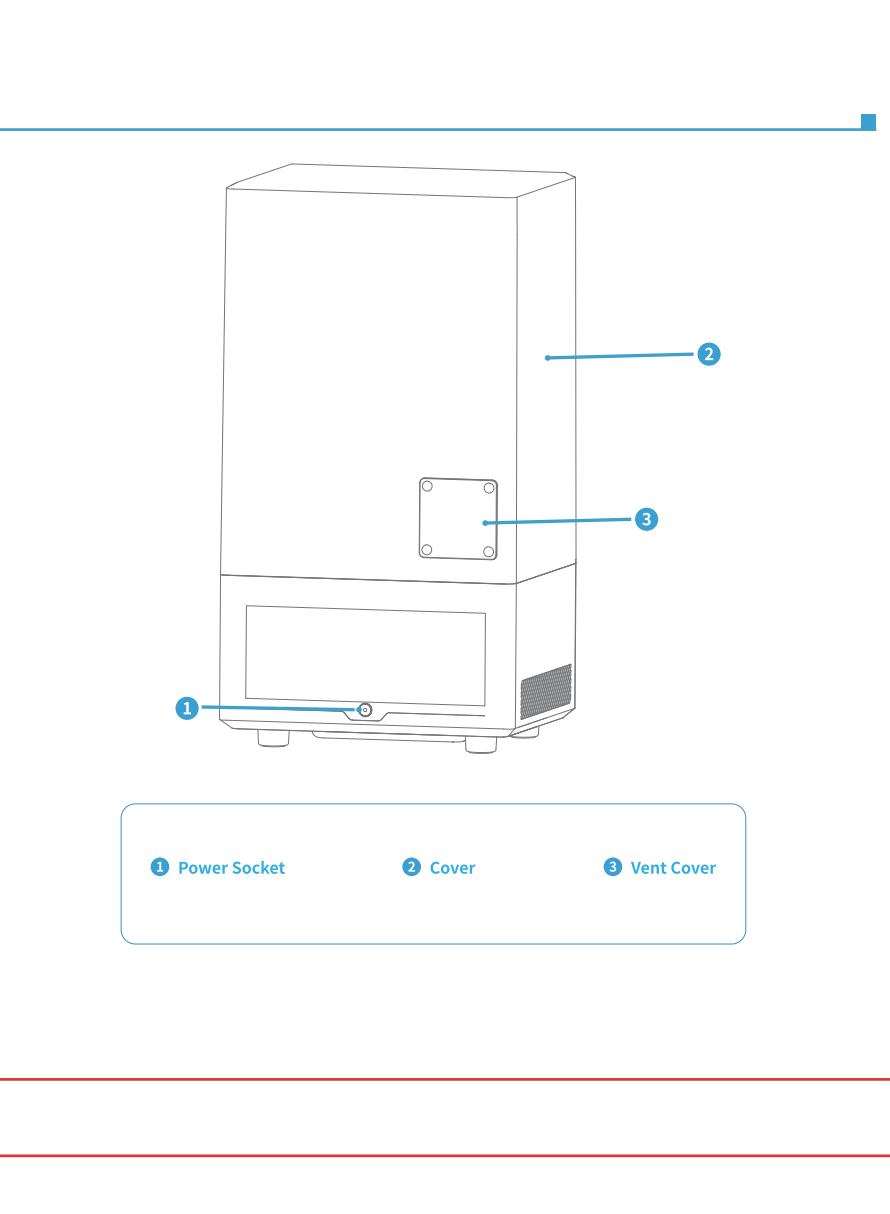
SATURN 2 3D Printer Tech Specs

System: EL3D-3.0.1	System Parameters
Operation: 3.5 Inch Touch Screen	
Slicer Software: CHITUBOX	
Connectivity: USB	

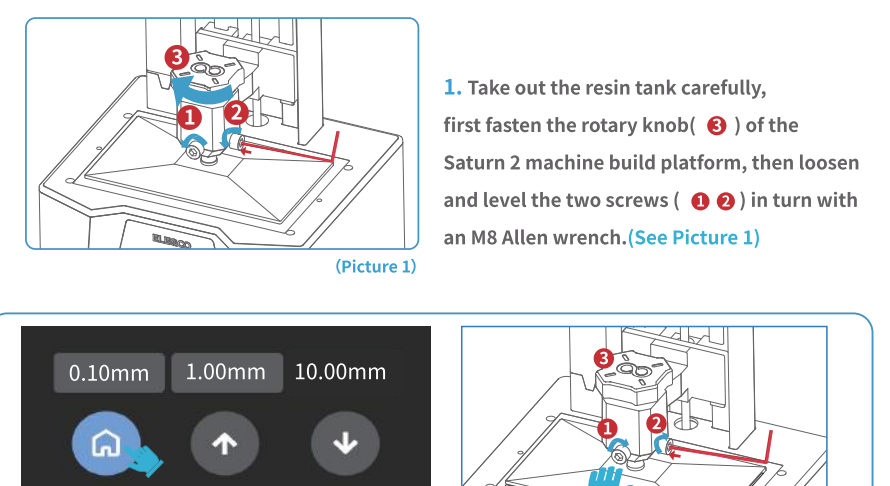
Technology: MSLA Photocuring	Printing Specification
Light Source: COB (wavelength 405nm)	
XY Resolution: 0.0285mm (T680°4320)	
Z Axis Accuracy: 0.00125mm	
Layer Thickness: 0.01-0.2mm	
Printing Speed: 30-70mm/h	
Power Requirements: 100-240V 50/60HZ 24V 4A	

Dimensions: 305.9mm(L)*273mm(W)*567.3mm(H)	Hardware Specification
12.04in(L)*10.75in(W)*22.33in(H)	
Build Volume: 218.88mm (L)*123.12mm (W)*250mm (H)	
8.62in(L)*4.85in(W)*9.84in(H)	
Weight: 24.25lbs(11kg)	

Printer Components



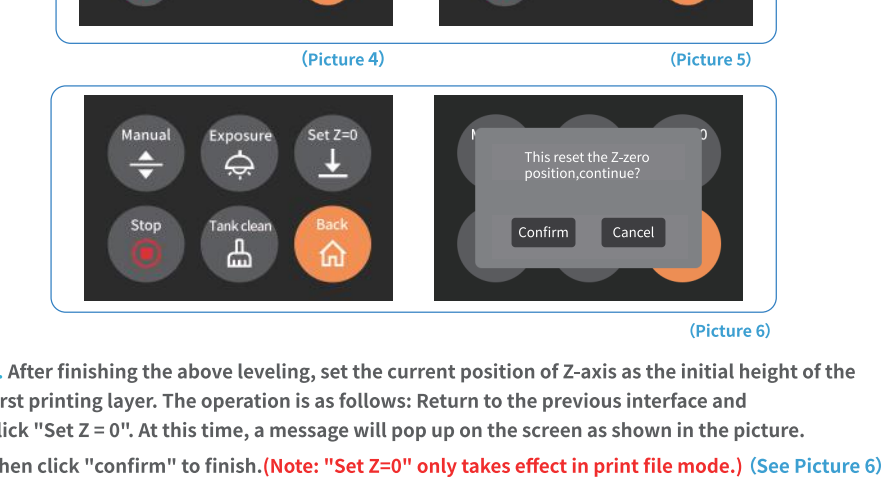
Leveling



2. Put a Saturn 2 leveling card between the build platform and the LCD screen, touch the screen to click "Move Z axis to zero". (See Picture 2) When the build platform stops moving, use an M8 Allen key to tighten the leveling screws diagonally, please be sure to tighten the screws in the order of the serial number (2, 3). (See Picture 3)

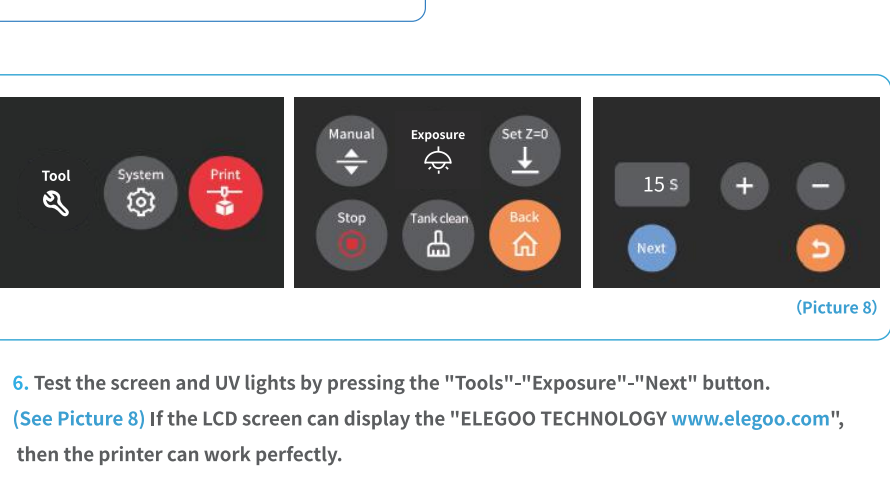
3. Since the distance between the build platform and the screen will be changed during the process of tightening the screws of the build platform, if you find that the leveling card of Saturn 2 can be pulled out with no resistance, please click the "down" button (step value is 0.1mm) until there is slight resistance to pull out the Saturn 2 leveling card. (See Picture 4)

If you find the resistance of pulling out the Saturn 2 leveling card is too high, please click the "up" button (step value is 0.1mm) until the Saturn 2 leveling card can be pulled out with slight resistance. (See Picture 5)



4. After finishing the above leveling, set the current position of Z-axis as the initial height of the first printing layer. The operation is as follows: Return to the previous interface and click "Set Z=0". At this time, a message will pop up on the screen as shown in the picture. Then click "confirm" to finish. (Note: "Set Z=0" only takes effect in print file mode.) (See Picture 6)

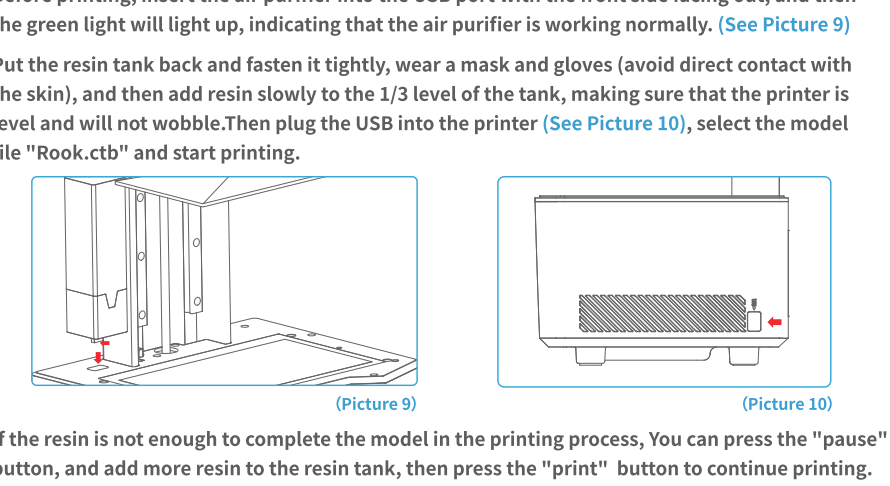
5. Press the "up" button on the touch screen 10 times until the build platform rises to 10.00mm. Now, the leveling is completed, and put resin tank back and fasten the screws to be ready for printing. (Every time you click the "up" on the touch screen, the Z-axis will rise 10mm.) (See Picture 7)



6. Test the screen and UV lights by pressing the "Tools"-"Exposure"-"Next" button. (See Picture 8) If the LCD screen can display the "ELEGOO TECHNOLOGY www.elegoo.com", then the printer can work perfectly.

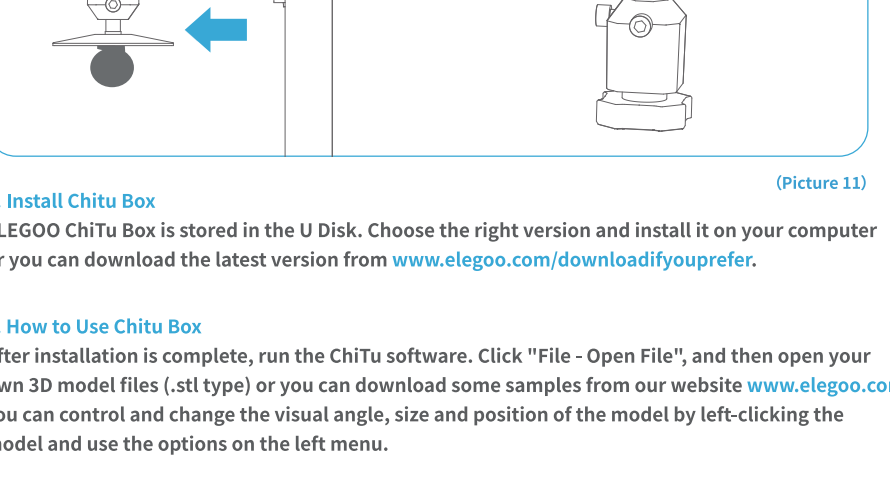
Test Printing

1. Model Printing (Cover the machine with the anti-UV cover.)



Before printing, insert the air purifier into the USB port with the front side facing out, and then the green light will light up, indicating that the air purifier is working normally. (See Picture 9)

Put the resin tank back and fasten it tightly, wear a mask and gloves (avoid direct contact with the skin), and then add resin slowly to the 1/3 level of the tank, making sure that the printer is level and will not wobble. Then plug the USB into the printer (See Picture 10), select the model file "Rook-01" and start printing.



If the resin is not enough to complete the model in the printing process, you can press the "pause" button, and add more resin to the resin tank, then press the "print" button to continue printing.

Wash Your Print and Clean the Tank

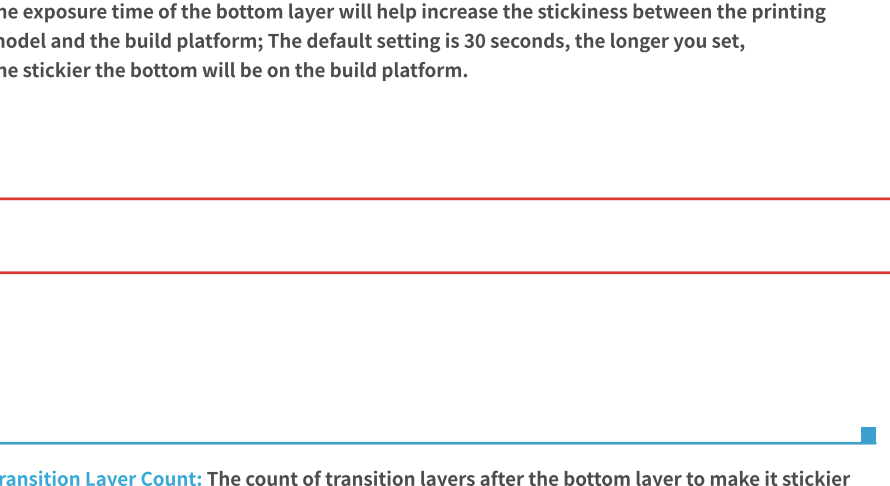
Once printing is completed, please wait until the residual resin on the build platform doesn't drop any more, then loosen the rotary knob of the build platform and remove the build platform. Leveling is not well set and it will cause first layer too thick or one side is very thick while the other side is very thin.

2. Model layer breakage
Printer is shaking during printing.
Release liner film is very loose due to long-time usage and need to be changed.
Build platform or resin tank is not fastened.

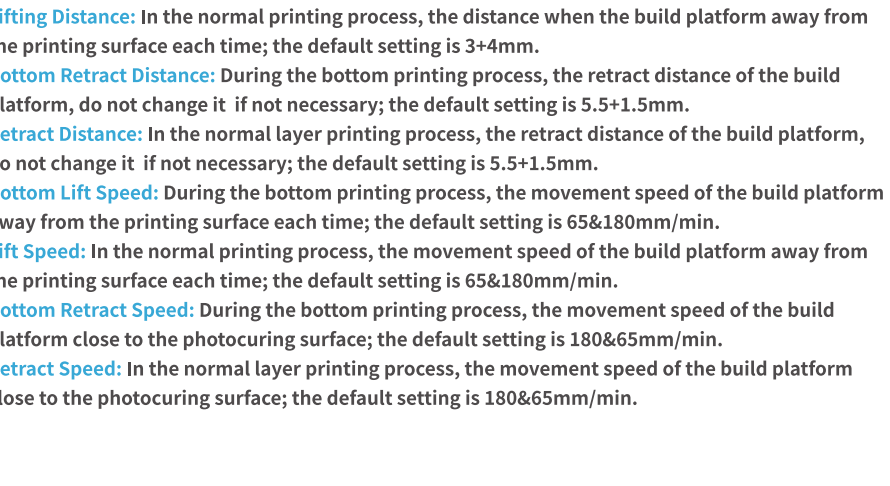
3. Abnormal Screen Exposure
If your printer doesn't work please contact us at 3dp@elegoo.com.
And as to better help and solve problems for you, please add your order ID in your email.

4. Printing failure
If the model was not completely printed or failed, there might be some residues left in the resin, which can be filtered out using a funnel when you save the resin back into its sealed bottle. If you don't filter out the residues the platform may cause damage to the LCD screen when you're printing next time.
As to the residual resin on the platform and tank, you can clean and wipe them up using tissues.

5. Maintenance
1. If Z axis keeps making friction noises, please add some lubricant to it.
2. Please do not use sharp or pointy objects to scrape the resin tank in case of causing damages to release liner film.



3. Be careful when you remove the build platform in case you may smash the SK LCD screen.
4. Remember to pour the rest of the resin in the tank back into the resin bottle and seal it well if you don't use the printer in the next 48 hours.
And if there are any residues please use a filter to filter them out.

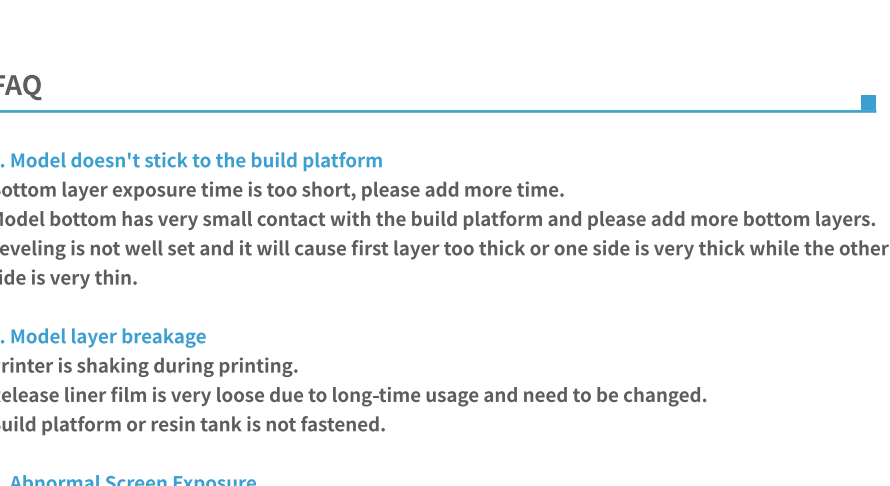


5. Please clean up the build platform and the printer using tissues or ethyl alcohol once you complete printing.
6. Please clean up the resin tank before changing another colors of resin.

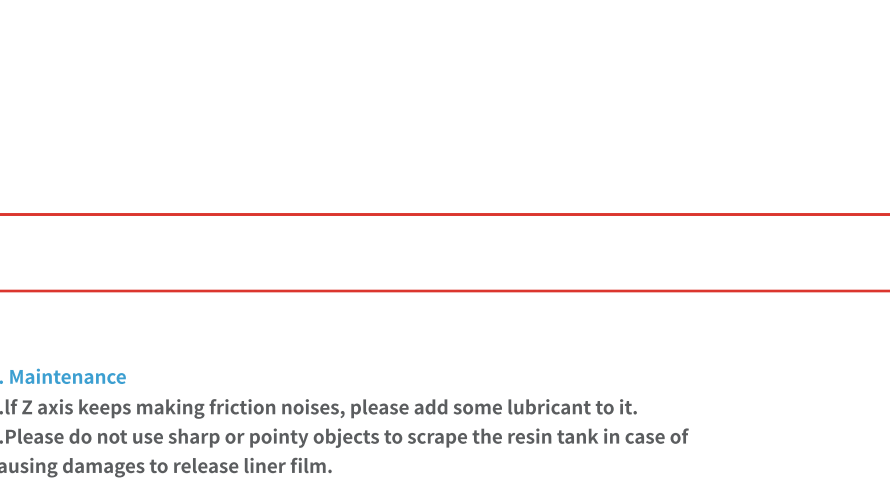
Warranty Service

1. ELEGOO provides a 1-year warranty for equipment damaged by non-human factors, except for filament, LCD screen, and FEP release film.
2. The LCD screen comes with a 6-month non-artificial damage warranty.
3. No warranty is provided for personal modification or disassembly of equipment.

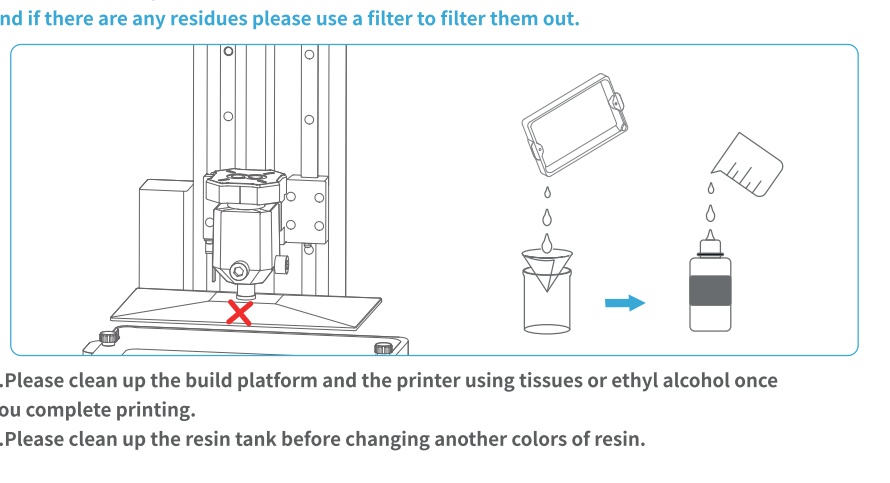
4. Save Model
After setting up all the parameters, click "slice", and once it's done, click "export sliced files to U disk", then plug the U disk to your printer and start printing. (See Picture 15)



5. Maintenance
1. If Z axis keeps making friction noises, please add some lubricant to it.
2. Please do not use sharp or pointy objects to scrape the resin tank in case of causing damages to release liner film.



3. Be careful when you remove the build platform in case you may smash the SK LCD screen.
4. Remember to pour the rest of the resin in the tank back into the resin bottle and seal it well if you don't use the printer in the next 48 hours.
And if there are any residues please use a filter to filter them out.

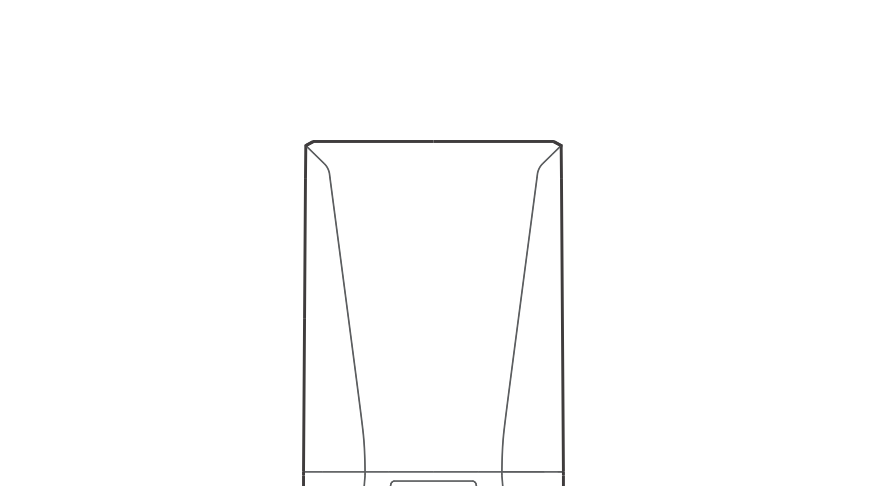


5. Please clean up the build platform and the printer using tissues or ethyl alcohol once you complete printing.
6. Please clean up the resin tank before changing another colors of resin.

Warranty Service

1. ELEGOO provides a 1-year warranty for equipment damaged by non-human factors, except for filament, LCD screen, and FEP release film.
2. The LCD screen comes with a 6-month non-artificial damage warranty.
3. No warranty is provided for personal modification or disassembly of equipment.

4. Save Model
After setting up all the parameters, click "slice", and once it's done, click "export sliced files to U disk", then plug the U disk to your printer and start printing. (See Picture 15)



5. Maintenance
1. If Z axis keeps making friction noises, please add some lubricant to it.
2. Please do not use sharp or pointy objects to scrape the resin tank in case of causing damages to release liner film.



3. Be careful when you remove the build platform in case you may smash the SK LCD screen.
4. Remember to pour the rest of the resin in the tank back into the resin bottle and seal it well if you don't use the printer in the next 48 hours.
And if there are any residues please use a filter to filter them out.

5. Please clean up the build platform and the printer using tissues or ethyl alcohol once you complete printing.
6. Please clean up the resin tank before changing another colors of resin.

Warranty Service

1. ELEGOO provides a 1-year warranty for equipment damaged by non-human factors, except for filament, LCD screen, and FEP release film.
2. The LCD screen comes with a 6-month non-artificial damage warranty.
3. No warranty is provided for personal modification or disassembly of equipment.

4. Save Model
After setting up all the parameters, click "slice", and once it's done, click "export sliced files to U disk", then plug the U disk to your printer and start printing. (See Picture 15)

5. Maintenance
1. If Z axis keeps making friction noises, please add some lubricant to it.
2. Please do not use sharp or pointy objects to scrape the resin tank in case of causing damages to release liner film.

3. Be careful when you remove the build platform in case you may smash the SK LCD screen.
4. Remember to pour the rest of the resin in the tank back into the resin bottle and seal it well if you don't use the printer in the next 48 hours.
And if there are any residues please use a filter to filter them out.

5. Please clean up the build platform and the printer using tissues or ethyl alcohol once you complete printing.
6. Please clean up the resin tank before changing another colors of resin.

Warranty Service

1. ELEGOO provides a 1-year warranty for equipment damaged by non-human factors, except for filament, LCD screen, and FEP release film.
2. The LCD screen comes with a 6-month non-artificial damage warranty.
3. No warranty is provided for personal modification or disassembly of equipment.

4. Save Model
After setting up all the parameters, click "slice", and once it's done, click "export sliced files to U disk", then plug the U disk to your printer and start printing. (See Picture 15)

5. Maintenance
1. If Z axis keeps making friction noises, please add some lubricant to it.
2. Please do not use sharp or pointy objects to scrape the resin tank in case of causing damages to release liner film.

3. Be careful when you remove the build platform in case you may smash the SK LCD screen.
4. Remember to pour the rest of the resin in the tank back into the resin bottle and seal it well if you don't use the printer in the next 48 hours.
And if there are any residues please use a filter to filter them out.

5. Please clean up the build platform and the printer using tissues or ethyl alcohol once you complete printing.
6. Please clean up the resin tank before changing another colors of resin.

Warranty Service

1. ELEGOO provides a 1-year warranty for equipment damaged by non-human factors, except for filament, LCD screen, and FEP release film.
2. The LCD screen comes with a 6-month non-artificial damage warranty.
3. No warranty is provided for personal modification or disassembly of equipment.

4. Save Model
After setting up all the parameters, click "slice", and once it's done, click "export sliced files to U disk", then plug the U disk to your printer and start printing. (See Picture 15)

5. Maintenance
1. If Z axis keeps making friction noises, please add some lubricant to it.
2. Please do not use sharp or pointy objects to scrape the resin tank in case of causing damages to release liner film.

3. Be careful when you remove the build platform in case you may smash the SK LCD screen.
4. Remember to pour the rest of the resin in the tank back into the resin bottle and seal it well if you don't use the printer in the next 48 hours.
And if there are any residues please use a filter to filter them out.

5. Please clean up the build platform and the printer using tissues or ethyl alcohol once you complete printing.
6. Please clean up the resin tank before changing another colors of resin.

Warranty Service

1. ELEGOO provides a 1-year warranty for equipment damaged by non-human factors, except for filament, LCD screen, and FEP release film.
2. The LCD screen comes with a 6-month non-artificial damage warranty.
3. No warranty is provided for personal modification or disassembly of equipment.

4. Save Model
After setting up all the parameters, click "slice", and once it's done, click "export sliced files to U disk", then plug the U disk to your printer and start printing. (See Picture 15)

5. Maintenance
1. If Z axis keeps making friction noises, please add some lubricant to it.
2. Please do not use sharp or pointy objects to scrape the resin tank in case of causing damages to release liner film.

3. Be careful when you remove the build platform in case you may smash the SK LCD screen.
4. Remember to pour the rest of the resin in the tank back into the resin bottle and seal it well if you don't use the printer in the next 48 hours.
And if there are any residues please use a filter to filter them out.

5. Please clean up the build platform and the printer using tissues or ethyl alcohol once you complete printing.
6. Please clean up the resin tank before changing another colors of resin.

Warranty Service

1. ELEGOO provides a 1-year warranty for equipment damaged by non-human factors, except for filament, LCD screen, and FEP release film.
2. The LCD screen comes with a 6-month non-artificial damage warranty.
3. No warranty is provided for personal modification or disassembly of equipment.

4. Save Model
After setting up all the parameters, click "slice", and once it's done, click "export sliced files to U disk", then plug the U disk to your printer and start printing. (See Picture 15)

5. Maintenance
1. If Z axis keeps making friction noises, please add some lubricant to it.
2. Please do not use sharp or pointy objects to scrape the resin tank in case of causing damages to release liner film.

3. Be careful when you remove the build platform in case you may smash the SK LCD screen.
4. Remember to pour the rest of the resin in the tank back into the resin bottle and seal it well if you don't use the printer in the next 48 hours.
And if there are any residues please use a filter to filter them out.

5. Please clean up the build platform and the printer using tissues or ethyl alcohol once you complete printing.
6. Please clean up the resin tank before changing another colors of resin.

Warranty Service

1. ELEGOO provides a 1-year warranty for equipment damaged by non-human factors, except for filament, LCD screen, and FEP release film.
2. The LCD screen comes with a 6-month non-artificial damage warranty.
3. No warranty is provided for personal modification or disassembly of equipment.

4. Save Model
After setting up all the parameters, click "slice", and once it's done, click "export sliced files to U disk", then plug the U disk to your printer and start printing. (See Picture 15)

5. Maintenance
1. If Z axis keeps making friction noises, please add some lubricant to it.
2. Please do not use sharp or pointy objects to scrape the resin tank in case of causing damages to release liner film.

3. Be careful when you remove the build platform in case you may smash the SK LCD screen.
4. Remember to pour the rest of the resin in the tank back into the resin bottle and seal it well if you don't use the printer in the next 48 hours.
And if there are any residues please use a filter to filter them out.

5. Please clean up the build platform and the printer using tissues or ethyl alcohol once you complete printing.
6. Please clean up the resin tank before changing another colors of resin.

Warranty Service

1. ELEGOO provides a 1-year warranty for equipment damaged by non-human factors, except for filament, LCD screen, and FEP release film.
2. The LCD screen comes with a 6-month non-artificial damage warranty.
3. No warranty is provided for personal modification or disassembly of equipment.

4. Save Model
After setting up all the parameters, click "slice", and once it's done, click "export sliced files to U disk", then plug the U disk to your printer and start printing. (See Picture 15)

5. Maintenance
1. If Z axis keeps making friction noises, please add some lubricant to it.
2. Please do not use sharp or pointy objects to scrape the resin tank in case of causing damages to release liner film.

3. Be careful when you remove the build platform in case you may smash the SK LCD screen.
4. Remember to pour the rest of the resin in the tank back into the resin bottle and seal it well if you don't use the printer in the next 48 hours.
And if there are any residues please use a filter to filter them out.

5. Please clean up the build platform and the printer using tissues or ethyl alcohol once you complete printing.
6. Please clean up the resin tank before changing another colors of resin.

Warranty Service

1. ELEGOO provides a 1-year warranty for equipment damaged by non-human factors, except for filament, LCD screen, and FEP release film.
2.